

General description shunts



Application

Shunts are used for expanding the measuring range of moving-coil measuring devices as well as for generating a current-dependent voltage drop, e.g. for electronic further processing.

Function

Shunts are manufactured according to DIN 43 703 and DIN EN 60 051. The accuracy amounts to 0.5 % referred to the nominal value.

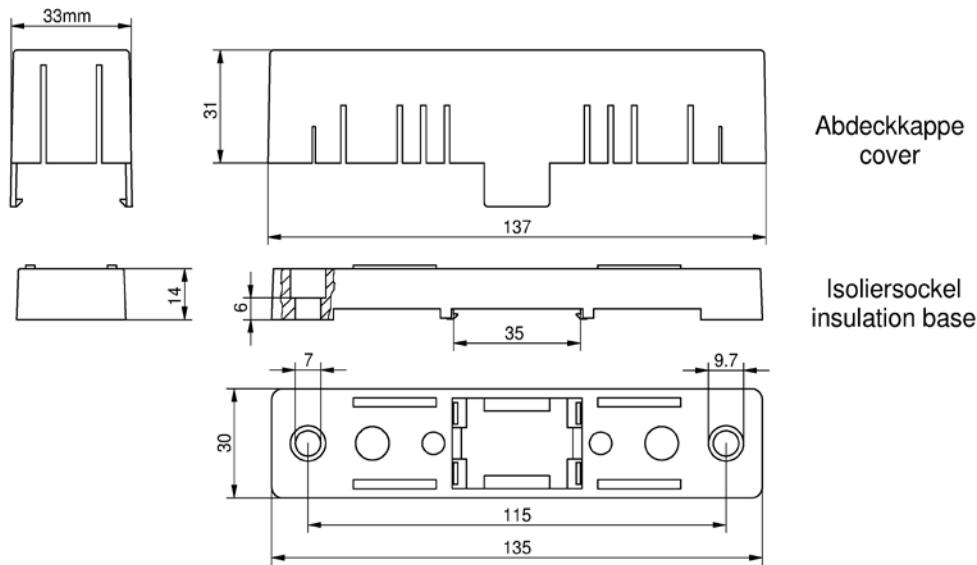
Special options may achieve an even higher accuracy of 0.2 % or 0.1 %.

Shunts up to 25 A are mounted on insulation bases. Such bases are suited for top hat rail mounting or screw fastening. The potential screws have an M5 thread. Connector copper and resistor material (Manganin) are hard-soldered with silver solder.

Special models

Adjustment of lead resistances at shunt	X
Differing rated current and/or voltage drop	on request
Extended accuracy 0,2% or 0,1%	on request
Shunt cover cap with insulating base for top hat rail mounting or screw fixing up to 25 A for 60 mV, 100 mV and 150 mV	X
from 25 A up to 150 A for 60 mV	X

Dimensions shunt cover cap

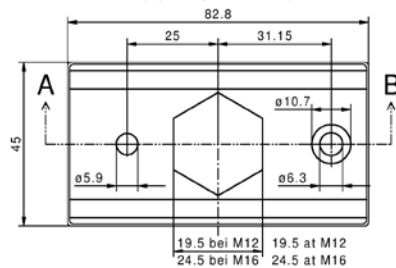


Isoliersockel für 200A - 600A

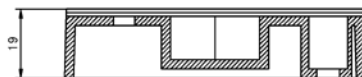
(2St. pro Shunt)

insulation base for 200A - 600A

(2pcs. per Shunt)



Schnitt A - B sectional view A - B



Befestigungsbohrungen: Maß "e" + 62,3mm
fixing holes: dimension "e" + 62,3mm